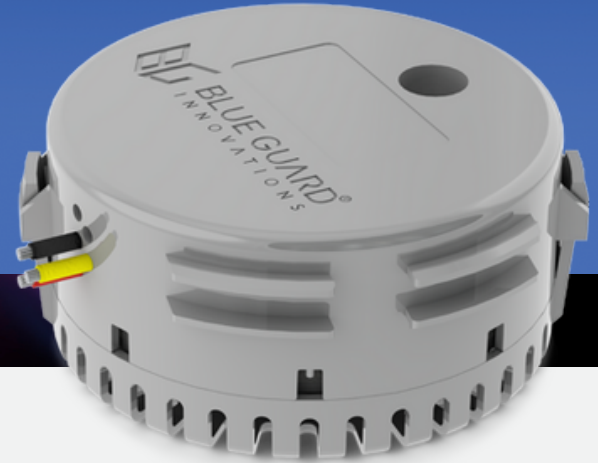


Oil and Fuel Alarm Sensor

SM-OIL

Spec Sheet



Oil and Fuel Alarm Sensor

CE and ISO 8846 Marine Ignition Protection
Tested to ABYC-1500 Standards
Oil/Fuel detection accuracy down to 1mm

Operating Voltage
9 - 36 Vdc

Power Consumption
22mA @ 12 Vdc

Oil/Fuel Alarm Output
1 Amp Max

Backup Battery
Lithium Ion, Internally Charged
Lasts Up To 72 Hours

Wireless
Bluetooth 5 with Mesh Network
FCC ID X8WBT840X / IC ID 4100A-BT840X

Operational Conditions
-22 - 167°F / -30 - 75°C
95% R.H. @ 122°F / 50°C Non-Condensing

Size
5.9 x 4.6 x 2.0 in / 150 x 117 x 51 mm (with mounting bracket)

Weight
18.7 oz / 530 g (with mounting bracket and wiring)

Monitors
One Digital Alarm Input (Active-High or Active-Low)