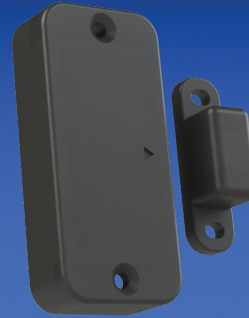




Secure Mate

BGWS-10

Spec Sheet



Secure Mate

Description:

Secure Mate is a single function Mate dedicated for security applications where doorways, hatches, cowlings or any other entrances or openings have to be protected from intrusion. It operates on a single CR2032 coin battery and requires no hard wiring. Small size and easy to install just about anywhere in the boat.

Power:

CR2032, coin battery

Battery expected life

2-3 years

Enclosure

IP-67 rated

Wireless

Bluetooth 5 with Mesh Network

FCC ID X8WBT840F / IC ID 4100A-BT840F

Operational Conditions

-22 - 167°F / -30 - 75°C

95% R.H. @ 122°F / 50°C Non-Condensing

Size

Main: 2.2 x 1.0 x 0.5 in / 56 x 26 x 12 mm

Magnet: 1.4 x 0.4 x 0.5 in / 36 x 10 x 12 mm

Weight

Main: 0.5 oz / 15 g

Magnet: 0.2 oz / 5g

Monitors

Open / Close