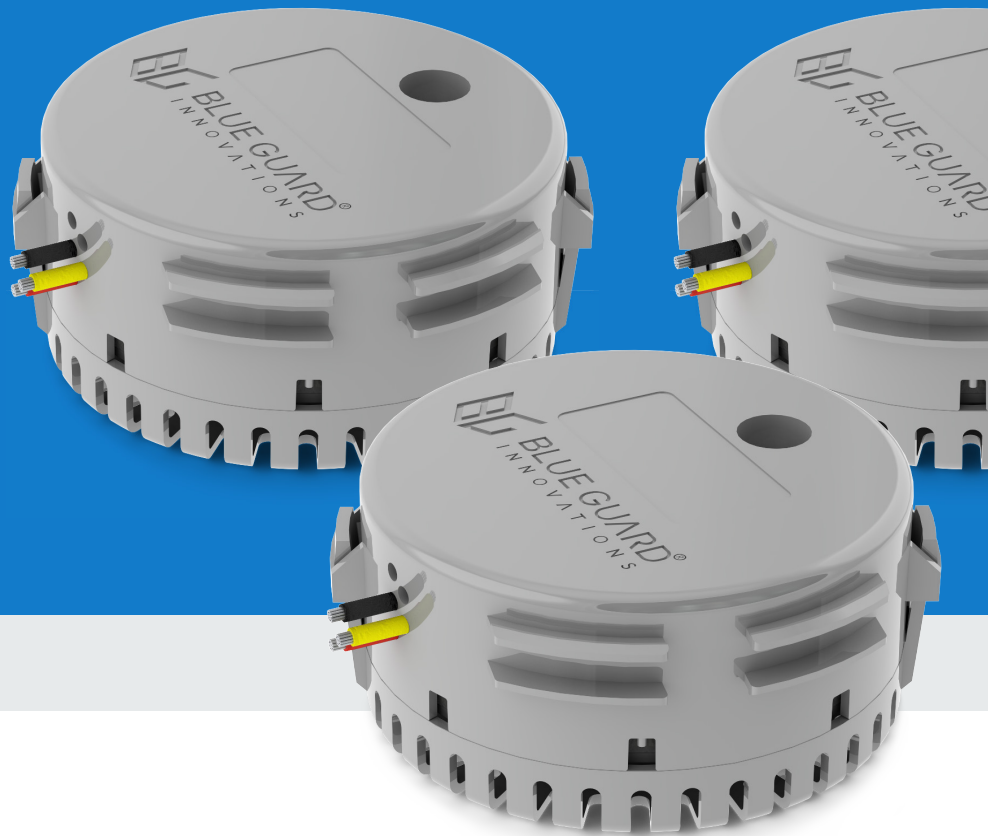


# BG-Oil

## Oil and Fuel Detector

### SPEC SHEET



## OVERVIEW

### About

The BG-Oil (Oil and Fuel Detector) senses the presence of oil and can be easily integrated into any vessel's alarm system. Compartments on a vessel or even in a landside space are often in close proximity to tanks and machinery where oil and fuel leaks can potentially occur. Installing the BG-Oil will provide an early warning for spills in these environments. The BG-Oil is CE and ISO 8846 Marine Ignition Protection Certified, tested to ABYC-1500 standards. Patented technology.

### Reliability

With IP-68 rated durability, the BG-Oil is made with rugged, non-corrosive ABS plastic. The sensor comes with a heavy-duty mounting bracket to attach to a bulkhead or frame with #8x0.75" 316 stainless steel screws. Heavy-duty 14 gauge marine grade wires connect to the BG-JBox (Junction Box) that should be mounted high on a bulkhead, keeping the connections dry and reliable. The BG-Oil has two integrated sensors to ensure a reliable and accurate detection.

### How It Works

With precise oil and fuel detection accuracy down to 1 mm (0.04 in), the BG-Oil triggers an alarm when oil or fuel is detected, once connected to a BG-CP (Control Panel) or any alarm system. The alarm output sources up to 1 amp, making it capable of driving user relays and actuators. When the sensor is configured in its factory default mode, Standard Alarm Mode, the alarm will turn ON when oil is detected and OFF when oil is no longer detected. In Latch Alarm Mode the alarm stays ON when oil is detected, until manual reset or power cycling of the devices. Set low, medium, or high oil detection sensitivity via the BGI Config App.

## FEATURES

### Oil and Fuel Detection

Down to 1 mm (0.04 in)

### Reliability

Two integrated sensors – solid-state with no moving parts or mechanical float switches that can easily be damaged

### Integrated Bluetooth Connectivity

Connects to the BGI Config App available on iOS and Android devices

### Alarm Output

12 or 24 Vdc, 1 amp max

### IP-68 Rated Durability

Rugged, non-corrosive ABS plastic housing and mounting bracket

### Operating Voltage

12 or 24 Vdc

### Operating Temperature Range

#### Operational with Full Functionality

32°F – 158°F / 0°C – 70°C

#### Operational

-22°F – 185°F / -30°C – 85°C

### Compact Size

Without Mounting Bracket (D x H) – 4.6 in x 2.0 in

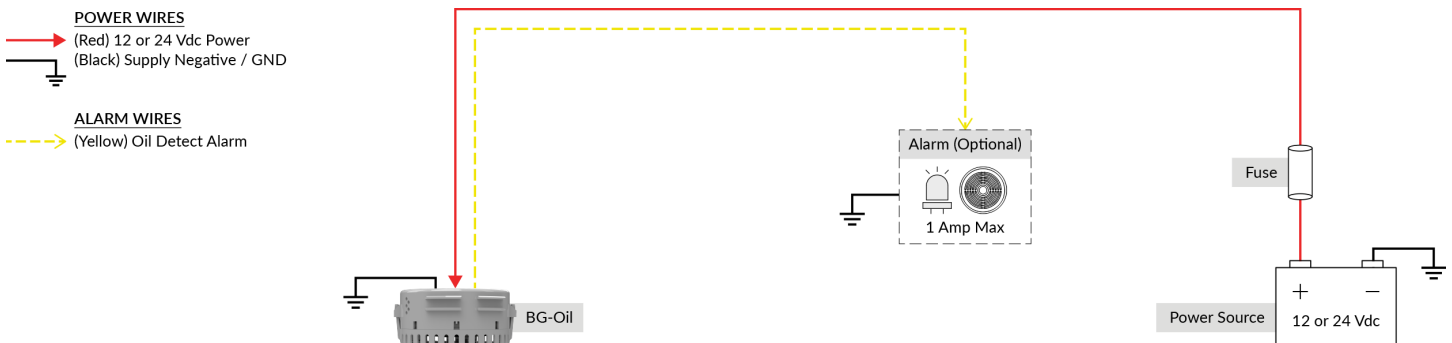
With Mounting Bracket (L x W x H) – 5.9 in x 4.6 in x 2.0 in

### Detachable Mounting Bracket

### CE & ISO 8846 Marine Ignition Protection Certified

Tested to ABYC-1500 Standards

## CONFIGURATION



## MODES OF OPERATION

### Configurable through the BGI Config App

#### Latch Alarm Mode

Alarm stays ON when oil is detected, until manual reset or power cycling of device

#### Standard Alarm Mode

- Alarm turns ON when oil is detected
- Alarm turns OFF when oil is no longer detected

## WIRES

### Three Wire System

Heavy-duty 14 gauge marine grade wires, 6 ft long

- (Black) Supply Negative / GND
- (Yellow) Oil Detect Alarm
- (Red) 12 or 24 Vdc Power